

ULTIMATE LED LIGHT KITS

Shine some light on your display with these kits, available in single-light and double-light versions.

- 11.75" stalk puts almost a foot of distance between the light and the display
- Adjustable joints at both ends of the unit let you angle each light to maximize impact
- Swappable attachments feature a clamp or clip, each compatible with a broad variety of displays
- Each light is powered by an attached 10' USB cord
- All components fit inside the included soft carry case



Removable clip slides onto the frames of pop-up displays and can also be used with the EuroFit light clamp (sold separately).



Removable clamp can be attached to an enormous variety of products, including retractors and the undersides of tables.



EuroFit light clamp (sold separately) can be used to attach Ultimate Light Kits to EuroFit displays.



Ultimate LED Light Kits

Item #	Description	1	2-5	6-11	12-24
150120	Ultimate LED Single Light Kit	125.00	121.00	116.00	113.00
150121	Ultimate LED Double Light Kit	240.00	235.00	230.00	220.00
Kit Includes: Light(s), Clamp(s), Clip(s), USB Adapter(s) and Soft Carry Case		USD MSRP (C)			

EuroFit Light Clamp

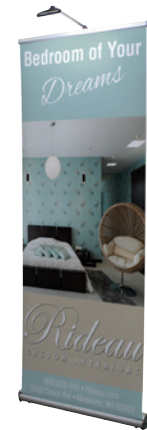
Item #	Description	1	2-5	6-11	12-24
255125	1 Light Clamp	5.00	4.90	4.70	4.60
255126	2 Light Clamps	10.00	9.70	9.40	9.10
		USD MSRP (C)			



Double light kit shown with Splash display (pages 164-165)



Single light kit shown with Show 'N' Write display (page 135)



Single light kit shown with Change Agent retractor (page 35)



Single light kit with EuroFit Light Clamp shown with EuroFit banner display (page 56)

EASELS

Display announcements, artwork, sign frames, light boxes and more with these versatile and durable easels.

- Extendable legs allow for use as a tabletop display or standalone floor display
- Tripod structure for easy placement in corners
- Each easel holds up to 20 lbs.
- Soft carry case included



Easels

Item #	Description	1	2-5	6-11	12-24
400011	Presto Easel	55.00	53.00	49.00	47.00
400052	Jumbo Easel	88.00	84.00	79.00	71.00
		USD MSRP (C)			



Presto Easel shown with Brilliant Board (sold separately; see page 118)



Jumbo Easel shown with corrugated plastic sign (sold separately; see page 112)

PRODUCT SPECIFICATIONS

Description	Product Size	Product Wt.
Presto Easel	38"W x 20"-63.625"H x 32"D	2 lbs.
Jumbo Easel	20"W x 24"-72"H x 16"D	4.5 lbs.

View current graphic templates, assembly videos and instructions on our website. See pages 188-190 for additional information that may apply to your order.

TABLET DISPLAY STAND

Stand out with a cost-effective kiosk that keeps your tablet safe and secure.

- Metal holder adjusts diagonally, creating a secure grip on the corners of your tablet
- Constructed of steel and ABS plastic
- Heavy-duty base keeps display stable
- Fits tablets from 9.7" to 12.9" (measured diagonally)
- 59" cable lock included
- Tablet not included



Tablet Display Stand

Item #	Description	1	2-5	6-11	12-24
338129	Kit	174.00	169.00	162.00	157.00
338130	Banner with Clips	64.00	62.00	60.00	58.00
338094	Hardware Only	112.00	110.00	108.00	107.00

Kit Includes: Stand, Banner and Banner Attachment Clips USD MSRP (C)



Hardware only

Tablet (sold separately) can be used in portrait or landscape orientation



Kit



Hook-and-loop fasteners make graphic changes easy.



SAIL TABLET STAND

Turn your tablet into a marketing kiosk with this stylish stand.

- Graphic is dye sublimated on super poly knit fabric
- Metal holder adjusts diagonally, creating a secure grip on the corners of your tablet
- Fits tablets from 9.7" to 12.9" (measured diagonally)
- 59" cable lock included
- Tablet not included



Sail Tablet Stands

Item #	Description	1	2-5	6-11	12-24
230036	Sail Tablet Stand Kit	275.00	265.00	260.00	255.00
230050	Tall Sail Tablet Stand Kit	300.00	295.00	285.00	280.00

Kit Includes: Hardware, Graphic and Soft Carry Case USD MSRP (C)



Sail

Tall Sail

PRODUCT SPECIFICATIONS

Description	Product Size	Finished Graphic Size	Product Wt.	Graphic Media
Tablet Display Stand	12.75"W x 48"H x 16.625"D	10"W x 28"H	18 lbs.	Titan™ No-Curl Laminated Media
Sail Tablet Stand	10"W x 43.875"H x 22"D	View Online Template	14.75 lbs.	Super Poly Knit Fabric
Tall Sail Tablet Stand	10"W x 57"H x 19"D	View Online Template	15.3 lbs.	Super Poly Knit Fabric

Setup fee: \$20.00(C); no setup fee on orders placed via our website; see page 190 for details.

View current graphic templates, assembly videos and instructions on our website.

See pages 188-190 for additional information that may apply to your order.

HARDWARE ONLY LEAD TIME: SHIPS SAME DAY WHEN ORDERED BEFORE 2 PM CENTRAL

TABLET STAND

SAIL STAND

AFTER FINAL PROOF APPROVAL
PRODUCTION LEAD TIME IS

2 OR 4 DAYS

QUAD POD MONITOR STAND

This innovative monitor stand combines stability with style. A large fabric banner behind the monitor gives you ample space for branding or messaging.

- Graphic is dye sublimated on polyester knit
- Hard plastic feet feature rubber pads to prevent the unit from sliding on smooth surfaces
- Heavy-duty anodized aluminum frame is lightweight and easy to set up
- Four legs for stability
- Designed for use with 24" to 42" monitors (measured diagonally)
- Monitor not included

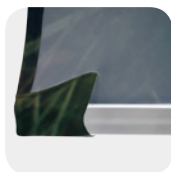


Quad Pod Monitor Stand

Item #	Description	1	2-5	6-11	12-24
255095	Kit	600.00	585.00	575.00	555.00
255096	Hardware Only	400.00	390.00	385.00	370.00
Kit Includes: Hardware, Banner and Soft Carry Case		USD MSRP (C)			



Universal X-mount system (patent pending) is compatible with a wide variety of monitor brands (monitor not included).



Fabric banner installs by sliding the built-in pockets over rails on the frame.



EUROFIT MONITOR STAND

An eye-catching monitor stand lets you enhance your presentation with video footage.

- Display comes with hardware for mounting a monitor (monitor not included)
- Graphics are dye sublimated on two-way stretch fabric
- Flame retardant treated (FR rated for exhibit halls)



EuroFit Monitor Stands

Item #	Description	1	2-5	6-11	12-24
255209	Twist Monitor Stand Kit	1000.00	980.00	950.00	930.00
255212	Swish Monitor Stand Kit	760.00	745.00	725.00	705.00
Kit Includes: Hardware, Graphic Cover and Soft Carry Case		USD MSRP (C)			



Mounting hooks attach the monitor to the frame (monitor not included).



Heavy-duty zipper secures graphic cover tightly for a wrinkle-free look.



PRODUCT SPECIFICATIONS

Description	Product Size	Recommended Monitor Size	Finished Graphic Size	Product Wt.	Graphic Media
Quad Pod	51.25"W x 79.125"H x 31.25"D	Up to 42" not exceeding 30 lbs.	View Online Template	14.5 lbs.	Polyester Knit
EuroFit Twist	74.625"W x 93.25"H x 24"D	Up to 32" not exceeding 25 lbs.	View Online Template	39 lbs.	Two-Way Stretch Fabric
EuroFit Swish	21.625"W x 59.375"H x 29"D	Up to 32" not exceeding 25 lbs.	View Online Template	23 lbs.	Two-Way Stretch Fabric

Setup fee: \$20.00(C); no setup fee on orders placed via our website; see page 190 for details. View current graphic templates, assembly videos and instructions on our website.

See pages 188-190 for additional information that may apply to your order.

HARDWARE ONLY LEAD TIME: SHIPS SAME DAY WHEN ORDERED BEFORE 2 PM CENTRAL

AFTER FINAL PROOF APPROVAL
PRODUCTION LEAD TIME IS
4 DAYS

- Suggested Uses:**
- Job Fairs
 - Trade Shows
 - Museum Exhibits
 - Sales Events

Direct View Display

- New repositionable graphic decal (sold separately) lets you personalize the front of the stand
- Four-tier design with polycarbonate trays
- Collapses to fit into included soft carry case
- Stores literature when not in use
- Available in black or white
- Curved pocket size: 9"W x 13.875"H x 1.625"D

Display Colors

- ☒ Black ☐ White



Black Direct View display shown with graphic decal (sold separately)

Easy View Display

- New repositionable graphic decal (sold separately) lets you personalize the front of the stand
- Five-tier design with plastic trays
- Collapses to fit into included soft carry case
- Stores literature when not in use
- Available in black or white
- Pocket size: 8.5"W x 12.375"H x 1.375"D

Display Colors

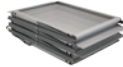
- ☒ Black ☐ White



White Easy View display shown with graphic decal (sold separately)

Z Display

- Six-tier design (three on each side) with acrylic and metal trays
- Sturdy chrome base
- Collapses to fit into included hard carry case
- Pocket size: 10"W x 12.5"H x 0.88"D



Collapsed

Clear View Display

- Four-tier design with acrylic trays
- Sturdy chrome base
- Stores literature when not in use
- Collapses to fit into included soft carry case
- Pocket size: 9.25"W x 14"H x 1.34"D



Collapsed

Roll Up Display

- Four nylon mesh pockets
- Vertical design with flexible rod construction
- Lightweight and portable
- Collapses to fit into included soft carry case
- Pocket size: 9.5"W x 12"H x 1"D



LITERATURE DISPLAYS

Keep your brochures and catalogs prominently displayed with these compact literature displays.



Literature Displays

Item #	Description	Pocket	1	2-5	6-11	12-24
230024	Direct View Display	1.625"D	250.00	245.00	240.00	230.00
230025	Easy View Display	1.375"D	250.00	245.00	240.00	230.00
230005	Z Display	0.88"D	210.00	205.00	200.00	195.00
230003	Clear View Display	1.34"D	148.00	143.00	138.00	133.00
230001	Roll Up Display	1"D	130.00	120.00	110.00	105.00
USD MSRP (C)						

Literature Display Graphic Decals

Item #	Description	Graphic Size	1	2-5	6-11	12-24
230026	Direct View Graphic Decal Only	9.25"W x 14.5"H	12.00	11.20	10.40	10.00
230027	Easy View Graphic Decal Only	8.5"W x 13.5"H	12.00	11.20	10.40	10.00
USD MSRP (C)						

PRODUCT SPECIFICATIONS

Description	Product Size	Product Wt.	Graphic Media
Direct View	11.125"W x 64.25"H x 13.625"D	14.5 lbs.	Surface Grip
Easy View	10.75"W x 61.5"H x 14.625"D	11.75 lbs.	Surface Grip
Z	11.125"W x 58.25"H x 13.63"D	16.5 lbs.	NA
Clear View	10"W x 60.75"H x 11"D	11.5 lbs.	NA
Roll Up	11"W x 53.13"H x 14.25"D	2.5 lbs.	NA

Setup fee: \$20.00(G); no setup fee on orders placed via our website; see page 190 for details.
View current graphic templates, assembly videos and instructions on our website.

See pages 188-190 for additional information that may apply to your order.

HARDWARE ONLY LEAD TIME: SHIPS SAME DAY WHEN ORDERED BEFORE 2 PM CENTRAL

AFTER FINAL PROOF APPROVAL
PRODUCTION LEAD TIME IS
3 DAYS

**DIRECTOR CHAIR
FABRIC COLORS**

- Black
- Burgundy-PMS 7421
- Hunter Green-PMS 3302
- Khaki-PMS 7502
- Navy Blue-PMS 2767
- Orange-PMS 1655
- Red-PMS 186
- Royal Blue-PMS 2738
- White

PMS colors are for reference only and may vary slightly from actual color.

DIRECTOR'S CHAIR

This classic chair design is casual, functional and versatile.

- Made in the USA from Appalachian Beech hardwood
- Natural woodgrain will have some color and pattern variation
- Heavy-duty canvas seat and seat backing
- Supports up to 225 lbs.



Table-Height with full-color imprint



Bar-Height with full-color imprint

**Unimprinted**

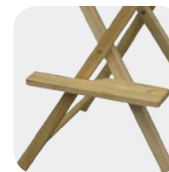
Item #	Description	1	2-5	6-11	12-24
111025	Table-Height	137.00	136.00	135.00	134.00
111029	Bar-Height	158.00	157.00	156.00	155.00
Stock fabric colors USD MSRP (C)					

**Full-Color Imprint**

Item #	Description	1	2-5	6-11	12-24
111026	Table-Height	147.00	146.00	145.00	144.00
111030	Bar-Height	180.00	179.00	178.00	177.00
Stock fabric colors imprinted with any color(s) USD MSRP (C)					



Hinge lock keeps the chair stable.



The Bar-Height Director's Chair features a footrest that naturally folds out as you open the chair.

EVENT CHAIR

This popular chair is great for expanding brand recognition or showing off your team spirit.

- Backrest slipcover can be imprinted on one or both sides
- Durable steel frame
- Supports up to 225 lbs.
- Arm rest features a beverage holder
- Folds away to fit inside the included drawstring carry case

**Full-Color Imprint**

Item #	Description	1	2-5	6-11	12-24
111060	Single-Sided Kit	45.00	44.10	43.40	42.80
111061	Double-Sided Kit	55.00	53.90	53.10	52.30
Kit Includes: Event Chair, Imprinted Slipcover and Drawstring Carry Case USD MSRP (C)					

**Fabric Colors**

Blue-PMS 2132



Navy-PMS 2767



Red-PMS 200

PRODUCT SPECIFICATIONS

Description	Product Size	Graphic Size	Product Wt.
Table-Height	23"W x 34.25"H x 18"D (Seat Height 18")	13"W x 4.5"H	11 lbs.
Bar-Height	24.125"W x 46.5"H x 21"D (Seat Height 30.25")	13"W x 4.5"H	14 lbs.
Event Chair	32"W x 32"H x 21"D	13"W x 4.5"H	6 lbs.

Setup fee: \$20.00(C); no setup fee on orders placed via our website; see page 190 for details. View current graphic templates, assembly videos and instructions on our website. See pages 188-190 for additional information that may apply to your order.

UNIMPRINTED DIRECTOR'S CHAIR LEAD TIME: SHIPS SAME DAY WHEN ORDERED BEFORE 2 PM CENTRAL

AFTER FINAL PROOF APPROVAL
PRODUCTION LEAD TIME IS
3 DAYS

- Sporting Events
- Trade Shows
- Waiting Areas
- Entertainment



Loveseat



Chair



Ottoman

INFLATABLE FURNITURE

Inflatable furniture creates a fun, casual atmosphere, making it a good fit for creative meeting areas.

- Multiple options available to create the configuration you're looking for
- Polyurethane plastic material
- Graphics are dye sublimated on two-way stretch fabric that encases the furniture
- Each piece of furniture can support up to 250 lbs.
- Inflates in less than five minutes
- Valve seals air inside
- Cover is flame retardant treated (FR rated for exhibit halls)
- Air pump sold separately



Inflatable Furniture

Item #	Description	1	2-5	6-11	12-24
211100	Ottoman Kit	135.00	132.00	128.00	124.00
211103	Chair Kit	250.00	245.00	237.00	233.00
211113	Loveseat Kit	500.00	488.00	472.00	459.00
211109	Couch Kit	741.00	722.00	706.00	690.00

Kit Includes: Inflatable Structure and Graphic Cover

USD MSRP (C)

Air Pump Sold Separately

Air Pumps

Item #	Description	1	2-5	6-11	12-24
211013	Electric Pump	75.00	73.00	71.00	68.00
211014	Hand Pump	30.00	29.00	28.00	27.00

Air Pumps not included in kits

USD MSRP (C)



Electric Pump
Item #211013

Hand Pump
Item #211014



Air Pump not included in kits and must be purchased separately



Loveseat's inflatable structure is a single unit.



Couch is made up of three individual chairs placed together.

PRODUCT SPECIFICATIONS

Description	Product Size	Finished Graphic Size	Product Wt.	Graphic Media
Ottoman	30"W x 17.5"H x 30"D	View Online Template	3.5 lbs.	Two-Way Stretch Fabric
Chair	30.5"W x 27.25"H x 32.5"D	View Online Template	5.5 lbs.	Two-Way Stretch Fabric
Loveseat	61"W x 27.25"H x 32.5"D	View Online Template	10.5 lbs.	Two-Way Stretch Fabric
Couch	95"W x 27.25"H x 32.5"D	View Online Template	16 lbs.	Two-Way Stretch Fabric

Setup fee: \$20.00(G); no setup fee on orders placed via our website; see page 190 for details.

View current graphic templates, assembly videos and instructions on our website.

See pages 188-190 for additional information that may apply to your order.

HARDWARE ONLY LEAD TIME: SHIPS SAME DAY WHEN ORDERED BEFORE 2 PM CENTRAL

AFTER FINAL PROOF APPROVAL
PRODUCTION LEAD TIME IS

3 DAYS

Suggested Uses:

- Meeting Spaces
- Libraries
- Offices
- Trade Shows



BOOST BALL CHAIR

With this trendy chair, your message is always on the ball.

- Steel base keeps the ball secure
- Cover is made of foam-backed polyester
- Includes inflatable ball and hand pump
- Supports up to 250 lbs.



Boost Ball Chair

Item #	Description	1	2-5	6-11	12-24
211120	Kit	190.00	184.00	177.00	171.00

Kit Includes: Steel Base, Inflatable Ball, Graphic Cover and Hand Pump USD MSRP (C)



Hook-and-loop fasteners keep the cover secure.



Anti-burst ball inflates using the included hand pump.



INFLATABLE STOOL

The newest addition to our inflatable furniture line offers comfortable seating and plenty of room for a logo or design.

- Graphic is dye sublimated on two-way stretch fabric
- Polyurethane bladder can be deflated and reinflated without removing the cover
- Supports up to 250 lbs.
- Air pump sold separately



Inflatable Stool

Item #	Description	1	2-5	6-11	12-24
211160	Kit	225.00	219.00	210.00	203.00

Kit Includes: Inflatable Bladder, Graphic Cover and Hard Base USD MSRP (C)

Air Pump Sold Separately

Air Pumps

Item #	Description	1	2-5	6-11	12-24
211013	Electric Pump	75.00	73.00	71.00	68.00
211014	Hand Pump	30.00	29.00	28.00	27.00

Air Pumps not included in kits USD MSRP (C)



A discreet zipper near the bottom of the unit keeps the cover tightly wrapped around the bladder.



A hard base slides into the cover to protect the bottom of the bladder and keep the whole unit weighted down.



AIR PUMPS



Electric Pump
Item #211013



Hand Pump
Item #211014

Air Pump not included in kits and must be purchased separately

PRODUCT SPECIFICATIONS

Description	Product Size	Graphic Size	Product Wt.	Graphic Media
Boost Ball	16.625" W x 20" H x 16.625" D	View Online Template	7.75 lbs.	Foam-Backed Polyester
Stool	18" W x 26" H x 18" D	View Online Template	6 lbs.	Two-Way Stretch Fabric

Setup fee: \$20.00(C); no setup fee on orders placed via our website; see page 190 for details.

View current graphic templates, assembly videos and instructions on our website.

See pages 188-190 for additional information that may apply to your order.

HARDWARE ONLY LEAD TIME: SHIPS SAME DAY WHEN ORDERED BEFORE 2 PM CENTRAL

STOOL BOOST BALL

4 OR 7 DAYS AFTER FINAL PROOF APPROVAL
PRODUCTION LEAD TIME IS



Shown with top decal
(sold separately)



With a quick press of your thumb, the fabric's silicone gasket edge is pushed into a narrow channel built into the frame.



Interior LED backlights create a pleasant glow effect.



SHOWGOER BACKLIT COUNTER

A backlit glow makes this counter impossible to miss.

- Graphics are dye sublimated on 100% woven polyester fabric
- Silicone Edge Graphics (SEG) for easy graphic panel installation
- Acrylic countertop can be covered with a permanent adhesive vinyl decal (sold separately)
- Tool-free assembly



ShowGoer Backlit Counter

Item #	Description	1	2-5	6-11	12-24
257070	Kit	915.00	895.00	880.00	850.00
257075	Top Decal	50.00	46.50	43.50	41.50

Kit Includes: Hardware, 4 Fabric Graphic Panels and Soft Carry Case USD MSRP (C)



Get everything you need for a full presentation with the Trunk-to-Anywhere Total Show Package.

See page 185.



SHOWGOER CASE-TO-PODIUM

Take your display on the go. This podium converts into a wheeled case for simple, worry-free transportation.

- Dye-sublimated wrap slides on for easy setup
- Durable, roto-molded case
- Removable top and built-in tray for quick access to your show materials



ShowGoer Case-to-Podium

Item #	Description	1	2-5	6-11	12-24
257030	Kit	475.00	465.00	455.00	445.00
257031	Hardware Only	285.00	280.00	275.00	270.00

Kit Includes: Hardware and Graphic Wrap USD MSRP (C)



Holds up to three 24"-33.5" Economy Retractors.



Wheels and pull-up handle make transport easy.

PRODUCT SPECIFICATIONS

Description	Product Size	Finished Graphic Size	Product Wt.	Graphic Media
Backlit Counter	47.5"W x 37.75"H x 15.875"D	View Online Template	33.5 lbs.	Backlit Fabric
Case-To-Podium	38.375"W x 34.875"H x 16.875"D	View Online Template	27.5 lbs.	Two-Way Stretch Fabric

Setup fee: \$20.00(G); no setup fee on orders placed via our website; see page 190 for details.

View current graphic templates, assembly videos and instructions on our website.

See pages 188-190 for additional information that may apply to your order.

HARDWARE ONLY LEAD TIME: SHIPS SAME DAY WHEN ORDERED BEFORE 2 PM CENTRAL

AFTER FINAL PROOF APPROVAL
PRODUCTION LEAD TIME IS
4 DAYS

SignsB2B.com

Suggested Uses:

- Trade Shows
- Lobbies
- Coffee Shops
- Book Stores



POWER PEDESTAL

Let your guests charge their mobile devices at this handy pedestal, which can be covered in a vibrant, full-color design that shows off your logo or marketing message.

- Chargers for Lightning, Micro USB and USB Type-C are included
- Graphic is dye sublimated on two-way stretch fabric
- Silicone Edge Graphics (SEG) for easy graphic cover installation
- Aluminum tubing structure with composite wood surfaces
- Tool-free assembly



Power Pedestal

Item #	Description	1	2-5	6-11	12-24
257080	Kit	850.00	825.00	810.00	785.00
Kit Includes: Hardware, Graphic Cover and Soft Carry Case				USD MSRP (C)	



Charging cables stick out of holes in the pedestal's top surface.



The fabric's silicone gasket edge is pushed into a narrow channel built into the frame countertop and base panels.

PRO-SNAP DEMO STAND

This professional demo stand is a snap to set up, and it folds flat to fit into the included carry case.

- Easy assembly, cleaning and storage
- Replacement graphic decals not available



Pro-Snap Demo Stand

Item #	Description	1	2-5	6-11	12-24
257018	Graphic Decal Header and Base Kit	420.00	405.00	390.00	375.00
257017	Graphic Decal Header Kit	315.00	305.00	295.00	285.00
257016	Hardware Only	210.00	205.00	200.00	195.00
Kits Include: Hardware, Graphic Decal(s) and Soft Carry Case				USD MSRP (C)	



Display comes with an open back and a non-adjustable internal shelf where you can store supplies.



PRODUCT SPECIFICATIONS

Description	Product Size	Finished Graphic Size	Product Wt.	Graphic Media
Power Pedestal	27.5"W x 36.875"H x 27.5"D	View Online Template	19 lbs.	Two-Way Stretch Fabric
Pro-Snap	32"W x 81.75"H x 18.5625"D	Header: 30.4375"W x 11"H Base: 71.5"W x 29.5"H	19 lbs.	Pressure-Sensitive Vinyl

Setup fee: \$20.00(C); no setup fee on orders placed via our website; see page 190 for details.

View current graphic templates, assembly videos and instructions on our website.

See pages 188-190 for additional information that may apply to your order.

DEMO STAND HARDWARE ONLY LEAD TIME: SHIPS IN 4 DAYS WHEN ORDERED BEFORE 2 PM CENTRAL

POWER PEDESTAL PRO-SNAP
4 OR 7 DAYS
AFTER FINAL PROOF APPROVAL
PRODUCTION LEAD TIME IS

CASES

Our broad selection of cases helps you protect your investment by making transportation and storage simple.

- Soft carry cases feature 600 denier polyester fabric with straps
- Hard cases feature easy-grip handles or straps
- Color of soft carry cases may vary
- More options available online



Table Throw Soft Carry Case

Best for unimprinted or full-color imprinted rolled fabric table throws



Soft Carry Case

Perfect for Splash, GeoMetrix and Deluxe GeoMetrix floor displays



Tabletop Displays Soft Carry Case

Keeps tabletop displays safe and snug



Universal Retractor Soft Carry Case

36.25"W x 3.75"H x 5.25"D
Perfect for Ideal, 31.5" & 33.5" Economy and Economy Plus retractors



Universal Retractor Soft Carry Case

38"W x 4"H x 12"D
Works well with several of our retractors



Clear Vinyl Zip Bag

Ideal for folded, dye-sublimated fabric table throws and graphics



Banner Display Round Hard Case with Wheels

Use with many of our banner and retractable banner displays



Tabletop Pop-Up Display Square Hard Case

Best for tabletop pop-up displays and select fabric displays



Tabletop Display Hard Carry Case

Ideal for Fast Trak, Dynamo and Show 'N Write displays



Floor Display Hard Case

Keeps tabletop displays safe and snug



Plastic Hard Case

Ideal for our banner displays, back walls and trade show accessories



Graphix Tube

Perfect storage solution for large and extra-large rolled graphics

Soft Carry Cases

Item #	Description	Product Size	Product Wt.	1	2-5	6-11	12-24
220009G	Table Throw Soft Carry Case	38"W x 5"H x 5"D	1 lb.	31.00	30.00	29.00	28.00
220010G	Soft Carry Case	34"W x 16"H x 14"D	2.25 lbs.	84.00	81.00	78.00	76.00
220007G	Tabletop Displays Soft Carry Case	38"W x 25"H x 5"D	2.5 lbs.	36.70	34.10	31.90	30.50
220289	Tabletop Displays Soft Carry Case	48"W x 31.5"H x 6.25"D	2.8 lbs.	68.00	63.20	59.20	56.40
220085	Universal Retractor Soft Carry Case	36.25"W x 3.75"H x 5.25"D	2 lbs.	49.00	47.00	46.00	44.00
220055	Universal Retractor Soft Carry Case	38"W x 4"H x 12"D	4.5 lbs.	56.00	54.00	53.00	51.00
220069	Clear Vinyl Zip Bag	14.5"W x 17"H x 3"D	0.1 lb.	3.10	2.90	2.70	2.60
						USD MSRP (C)	

Soft carry cases cannot be imprinted.

Hard Cases

Item #	Description	Product Size	Product Wt.	1	2-5	6-11	12-24
220024	Banner Display Round Hard Case with Wheels	15"W x 42"H x 18.5"D	13.5 lbs.	235.00	230.00	225.00	220.00
220011	Tabletop Pop-Up Display Square Hard Case with Wheels	15.5"W x 41.25"H x 17"D	22.25 lbs.	315.00	305.00	300.00	290.00
220018	Tabletop Display Hard Carry Case	39"W x 27.25"H x 4.5"D	10 lbs.	265.00	260.00	255.00	250.00
220020	Floor Display Hard Case with Wheels	43.75"W x 34.25"H x 8"D	22 lbs.	420.00	415.00	410.00	405.00
220023	Floor Display Hard Case with Wheels	57"W x 26.5"H x 10"D	28 lbs.	435.00	430.00	425.00	420.00
CCH1242	Plastic Hard Case with Wheels	12"W x 46.75"H x 12"D	11 lbs.	320.00	315.00	310.00	305.00
CCH1250	Plastic Hard Case with Wheels	12.25"W x 54.5"H x 12.25"D	13 lbs.	335.00	330.00	325.00	320.00
220074	Graphix Tube	36"W x 4.5"D	2 lbs.	14.30	13.30	12.40	11.90
						USD MSRP (C)	

Hard cases cannot be imprinted.

**HARDWARE SHIPS
SAME DAY**
WHEN ORDERED BEFORE 2PM CENTRAL

PREMIUM CARRY CASES

An upgrade to our standard soft cases, these cases offer extra protection for your displays.

- Available in three sizes
- Constructed of compression-molded foam with a nylon shell
- A padlock (not included) can be used to secure the zipper
- Not intended to be shipped or checked as luggage



24.25\"W x 6\"H x 17.5\"D

Recommended for use with lights, table covers, EuroFit shelves, EuroFit graphic covers, mini retractors and more.



38.375\"W x 6\"H x 20\"D

Recommended for use with tabletop retractors, pop-up frames, Splash graphic wraps, smaller EuroFit displays, select 33\" retractors and more.



33.375\"W x 5.75\"H x 22.5\"D

Recommended for use with pop-up frames, shelves smaller EuroFit displays, Micro GeoMetrix frames, select 24\" and 31.5\" retractors, and more.



Shown open with product (not included)

Premium Carry Cases

Item #	Description	Product Size	Product Wt.	1	2-5	6-11	12-24
220280	Premium Carry Case	24.25\"W x 6\"H x 17.5\"D	2.2 lbs.	80.00	78.00	74.00	72.00
220281	Premium Carry Case	33.375\"W x 5.75\"H x 22.5\"D	4.2 lbs.	100.00	97.00	93.00	90.00
220282	Premium Carry Case	38.375\"W x 6\"H x 20\"D	4.6 lbs.	120.00	116.00	112.00	108.00

Carry cases cannot be imprinted.

USD MSRP (C)



Straps inside the case prevent contents from shifting during transport.

SHOWGOER PORTABLE TABLES

Never rent again! With these portable tables, you can plan ahead and avoid the cost of on-site rentals.

- Durable steel frame
- Molded plastic top
- Three portable designs to choose from



6' Folding Table



31.5\" Bar-Height Round Table



4' Demo Table



ShowGoer Portable Tables

Item #	Description	Product Size	Product Wt.	1	2-5	6-11	12-24
280007	6' Folding Table	72\"W x 28.75\"H x 29.75\"D	29 lbs.	128.00	125.00	122.00	118.00
280023	31.5\" Bar-Height Round Table	43.25\"H x 32.875\"D	16 lbs.	105.00	102.00	99.00	95.00
280018	4' Demo Table	47.625\"W x 36\"H x 23.875\"D	18.5 lbs.	92.00	90.00	88.00	86.00

USD MSRP (C)

View current graphic templates, assembly videos and instructions on our website.
See pages 188-190 for additional information that may apply to your order.